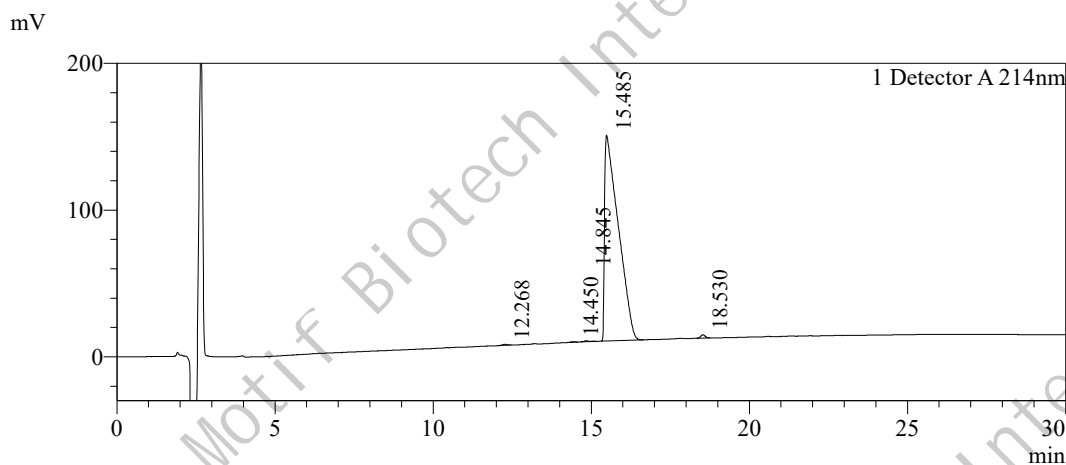


Sample Information

Name : Palmitoyl tripeptide-5
 Sequence : Pal-KVK
 Pump A : 0.1% Trifluoroacetic in 100% water
 Pump B : 0.1% Trifluoroacetic in 100% acetonitrile
 Total Flow : 1ml/min
 Wavelength : 214nm
 Analytical column type : Kromasil 100-5-C18 (4.6*250mm*5 µm)
 Dissolution method : 100% H₂O
 Inj. Volume : 25ul

Time	Module	Action	Value
0.01	Pumps	B.Conc	45
30.00	Pumps	B.Conc	75
33.00	Pumps	B.Conc	100
38.00	Pumps	B.Conc	100
40.00	Pumps	B.Conc	45
50.00	Controller	Stop	

Chromatogram



Peak Table

Detector A 214nm

Peak#	Ret. Time	Area	Height	Area%
1	12.268	6888	704	0.162
2	14.450	3248	395	0.076
3	14.845	7210	582	0.169
4	15.485	4225280	140165	99.078
5	18.530	21994	2236	0.516
Total		4264620	144081	100.000