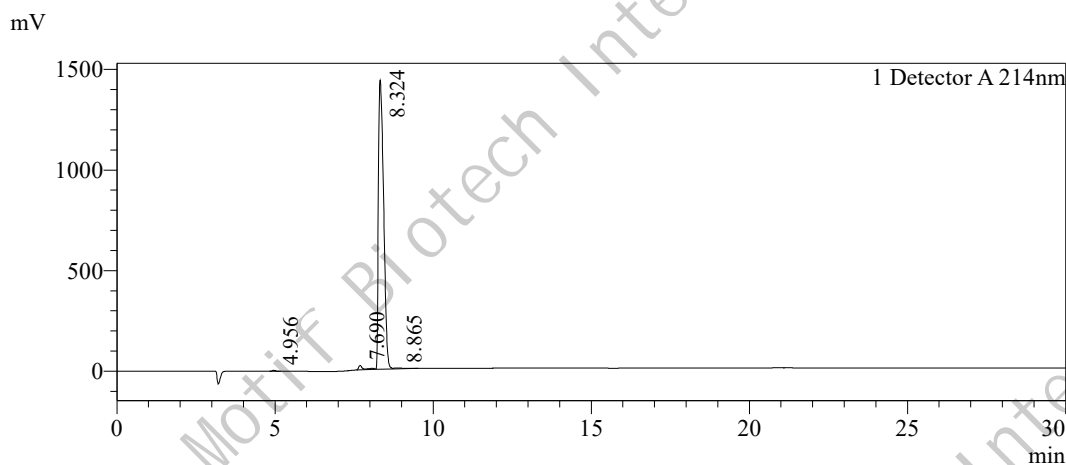


Sample Information

Name :Acetyl tetrapeptide-3  
 Sequence :Ac-KGHK-NH2 (Acetate Salt)  
 Pump A :0.1%Trifluoroacetic in 100% water  
 Pump B :0.1%Trifluoroacetic in 100% acetonitrile  
 Total Flow :1ml/min  
 Wavelength :214nm  
 Analytical column type :Kromasil 100-5-C18 (4.6\*250mm\*5 μm)  
 Dissolution method :100%H2O  
 Inj. Volume : 20ul

| Time  | Module     | Action | Value |
|-------|------------|--------|-------|
| 0.01  | Pumps      | B.Conc | 0.1   |
| 30.00 | Pumps      | B.Conc | 30    |
| 33.00 | Pumps      | B.Conc | 100   |
| 38.00 | Pumps      | B.Conc | 100   |
| 40.00 | Pumps      | B.Conc | 0.1   |
| 50.00 | Controller | Stop   |       |

Chromatogram



Peak Table

Detector A 214nm

| Peak# | Ret. Time | Area     | Height  | Area%   |
|-------|-----------|----------|---------|---------|
| 1     | 4.956     | 31162    | 4688    | 0.184   |
| 2     | 7.690     | 239499   | 21881   | 1.412   |
| 3     | 8.324     | 16589728 | 1436830 | 97.804  |
| 4     | 8.865     | 101866   | 4091    | 0.601   |
| Total |           | 16962255 | 1467491 | 100.000 |

Mail : marketing@motifbiotech.com

Web : https://www.motifbiotech.com

Add : B04, Building 17, No. 122, Yongan Rd, Suzhou National Hi-Tech District, PRC