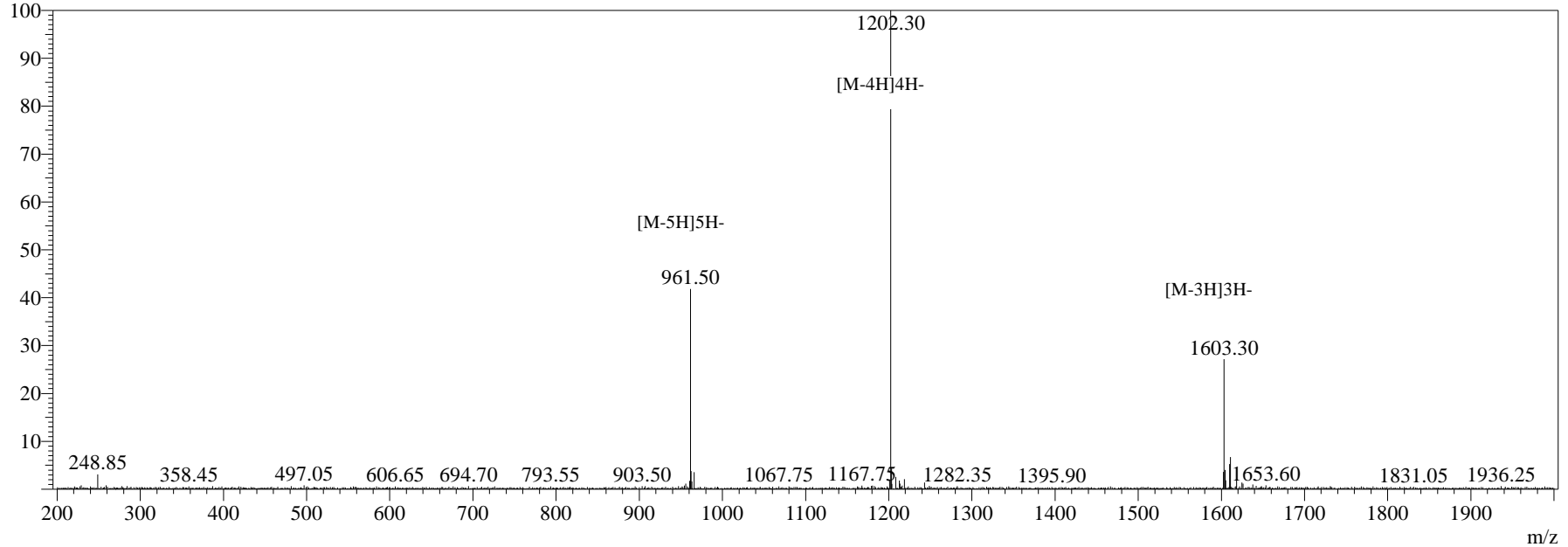


MS Spectrum

负

Intensity



Sample Information

Dissolution method :15% ACN+85% H₂O
 Date Acquired :2024/04/22 14:40:14
 Injection Volume :0.2ul
 Block Temp :200

Interface :ESI
 Nebulizing Gas Flow :1.5L0/min
 CDL Temp :250°C
 CDL Volt :0v

Prerod Bias :+4.5kv
 Detector :-0.2kv
 T.Flow :0.2ml/min
 B.conc :50% H₂O/50% MEOH

Name :Tirzepatide
 Sequence :Tyr-{Aib}-Glu-Gly-Thr-Phe-Thr-Ser-Asp-Tyr-Ser-Ile-{Aib}-Leu-Asp-Lys-Ile-Ala-Gln-{diacid-C20-gamma-Glu-(AEEA)2-Lys}-Ala-Phe-Val-Gln-Trp-Leu-Ile-Ala-Gly-Gly-Pro-Ser-Ser-Gly-Ala-Pro-Pro-Pro-Ser-NH₂

Theoretical :4813.45
 Observed :4813.20